



Prefix: **bi**



Meaning:
two, twice

bicycle **bi**annual



Prefix: tele

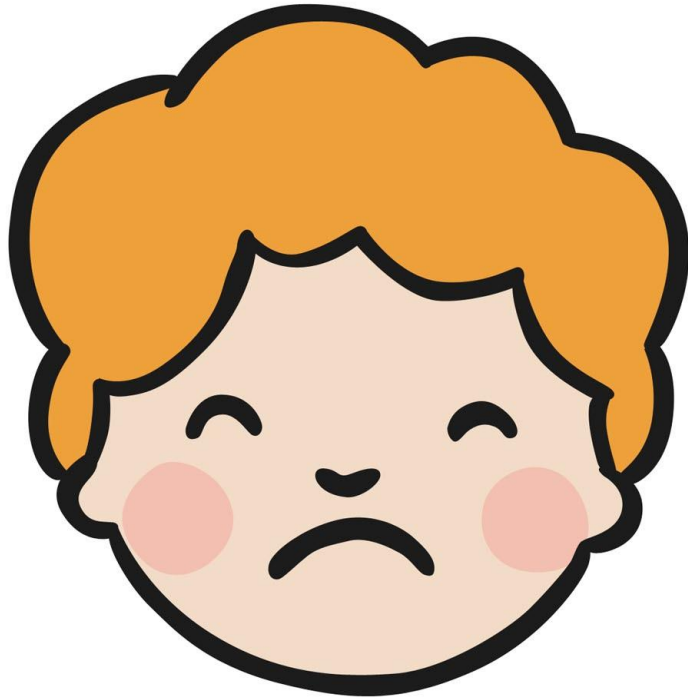


Meaning:
far, at a
distance

television telephone



Prefix: **dis**



Meaning:
not

dislike **dis**agree



Prefix: **mis**

X

Meaning:
wrong

mistake misbehave



Prefix: **semi**

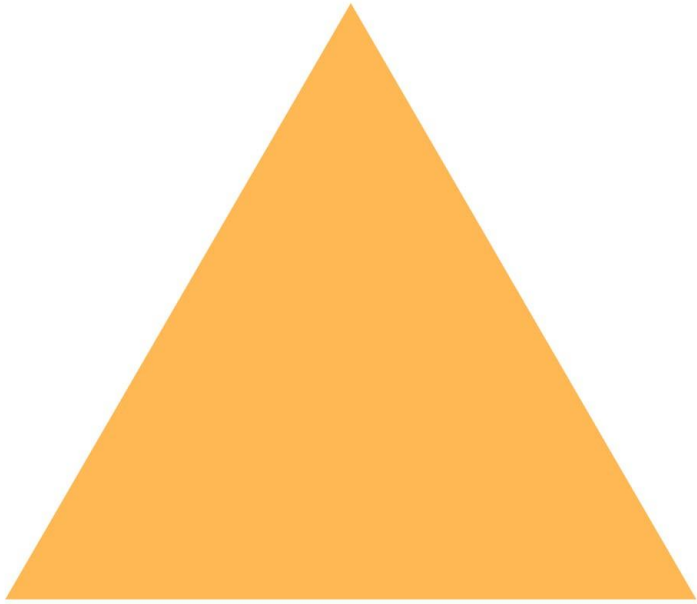
Meaning:
half



semicircle **semi**colon



Prefix: **tri**

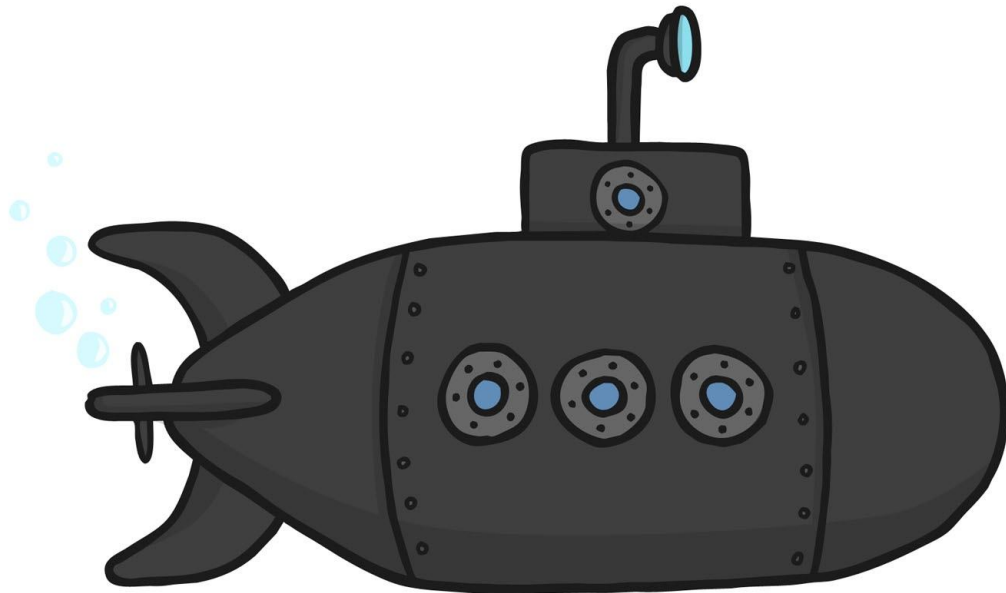


Meaning:
three

triangle **tri**cycle



Prefix: **sub**



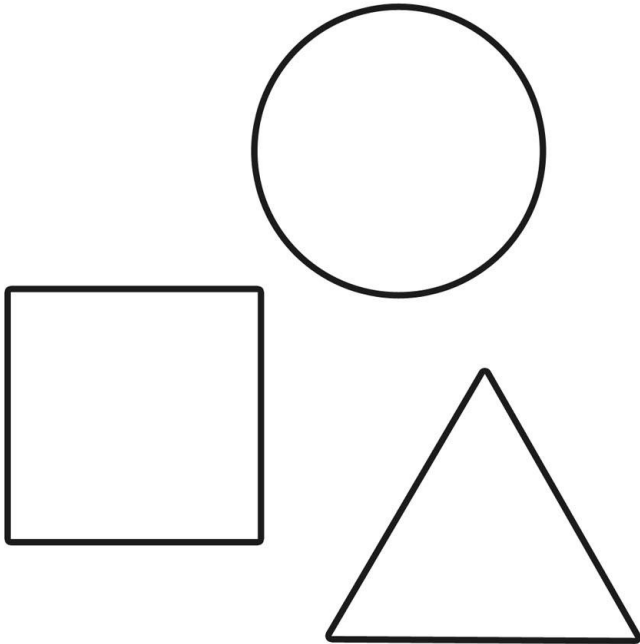
Meaning:
under

submarine **sub**way



Prefix: **mono**

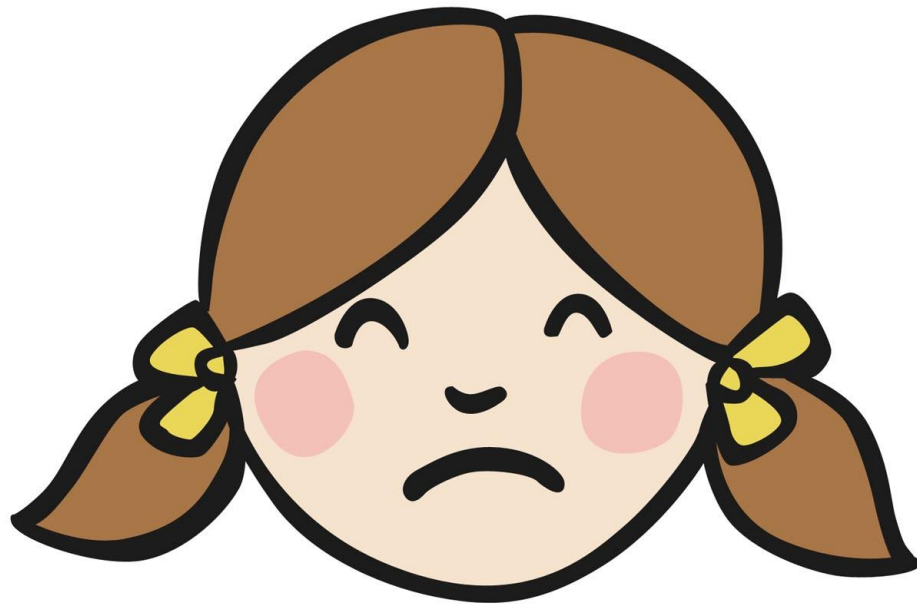
Meaning:
one, single



monochrome monotone



Prefix: **un**

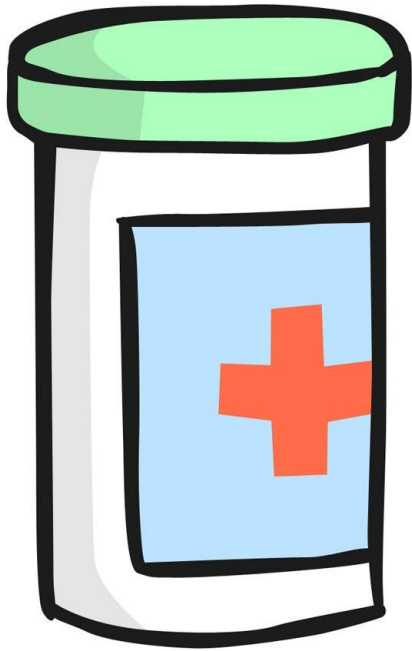


Meaning:
not, without

unhappy **un**known



Prefix: **anti**

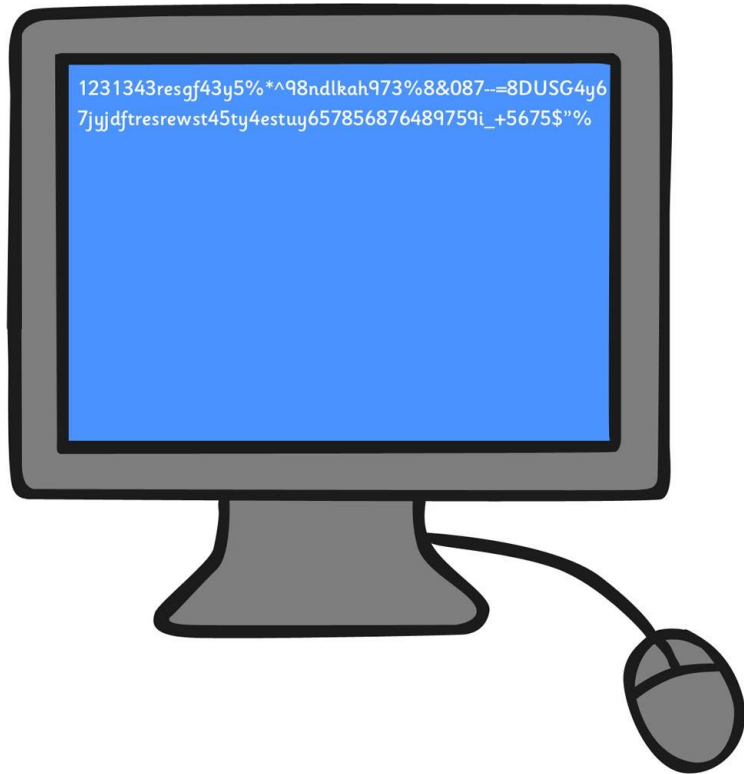


Meaning:
against,
opposite

antibiotic antisocial



Prefix: mal



Meaning:
bad

malfunction **mal**treat



Prefix: super

Meaning:
above, very



supermarket Superman



Prefix: **aero**

Meaning:

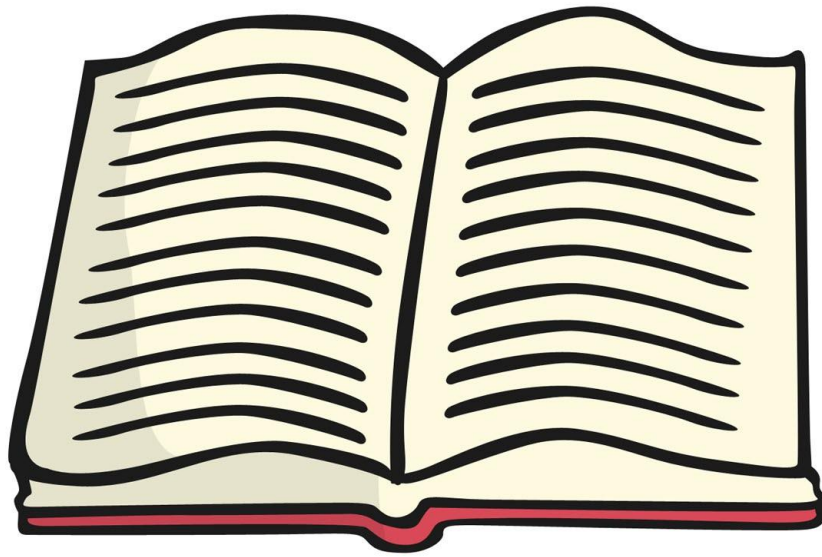
air



aeroplane **aero**dynamic



Prefix: auto



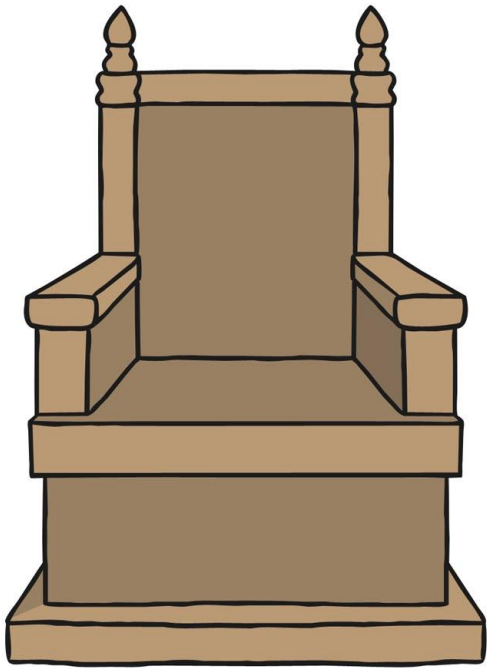
Meaning:
self

autobiography

autopilot



Prefix: **de**

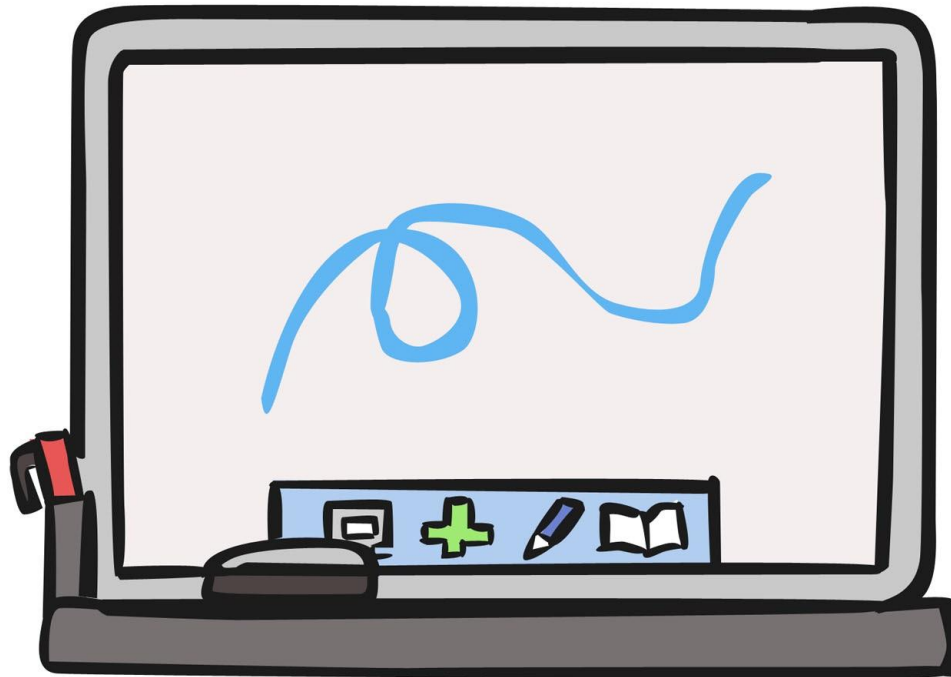


Meaning:
from, down,
opposite,
remove or
reduce

deforest **de**throne



Prefix: inter



Meaning:
between

interactive **inter**national



Prefix: **pre**

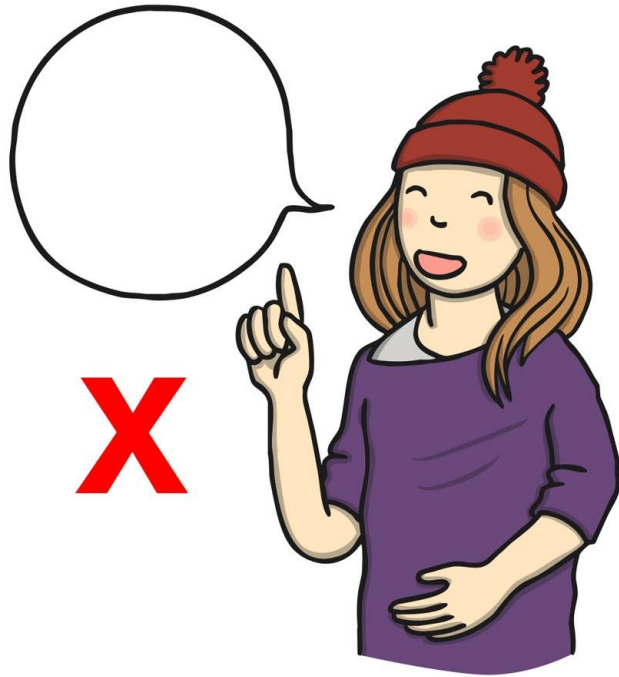


Meaning:
before

preschool **pre**view



Prefix: **ex**

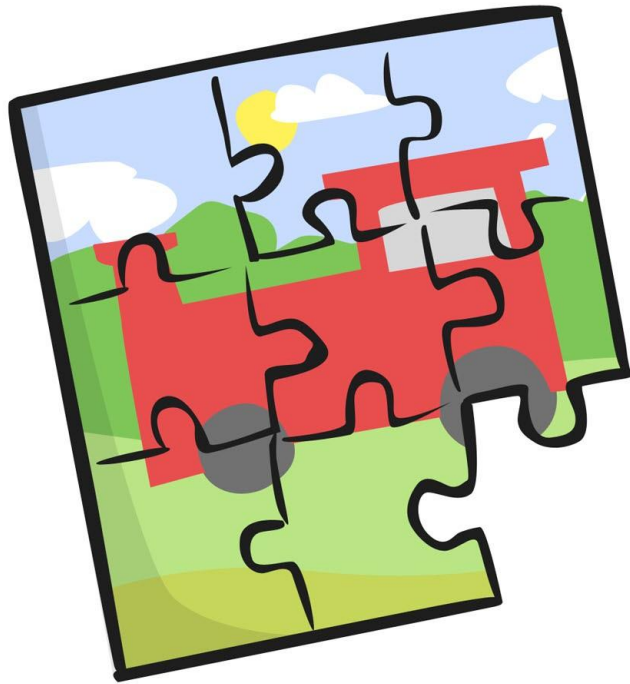


Meaning:
out of

excommunication **ex**port



Prefix: in



Meaning:
not

incomplete **in**human



Prefix: in

Meaning:

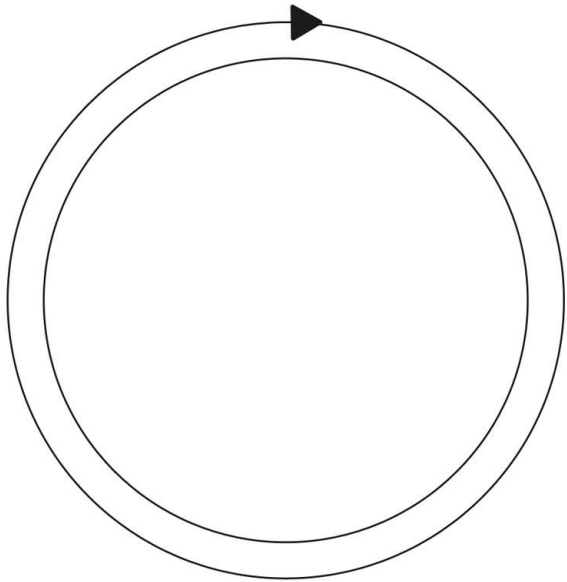
in, into

X

incorrect incapable



Prefix: **circum**



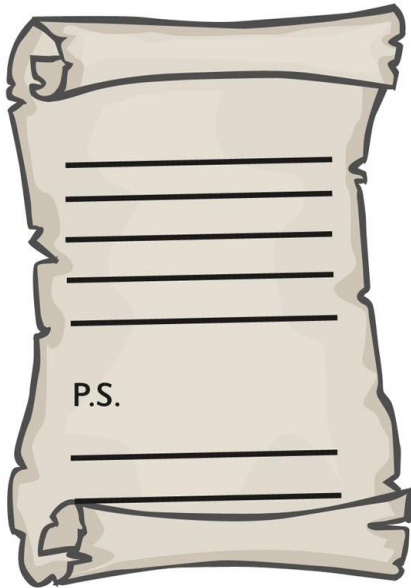
Meaning:
round

circumnavigate

circumference



Prefix: **post**

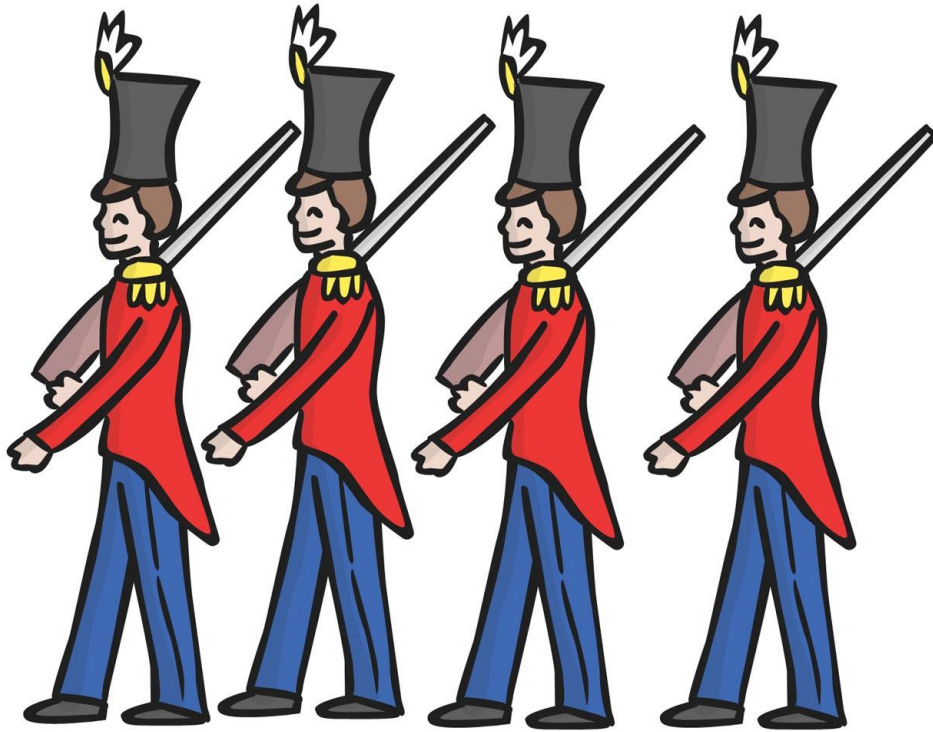


Meaning:
after

postscript **post**date



Prefix: pro



Meaning:

1. agreeing with or supporting
2. substituting for

pronoun

proactive



Prefix: **fore**



Meaning:
before

forecast **fore**warn



Prefix: **im**



Meaning:
not

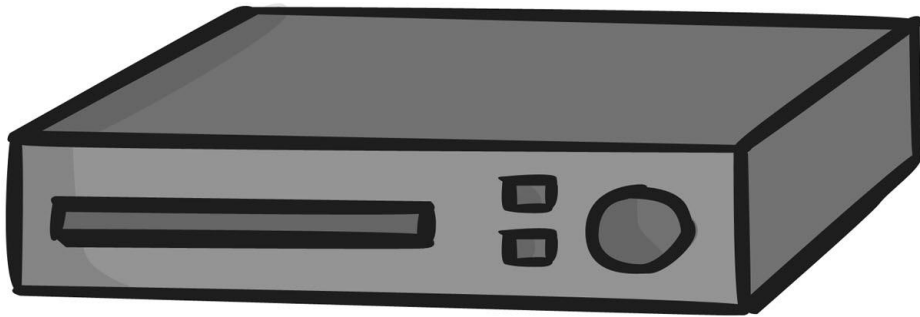
impossible

impolite



Prefix: **re**

Meaning:
again



replay **re**trace



Prefix: **trans**



Meaning:
across

transcribe

transform



Prefix: ante

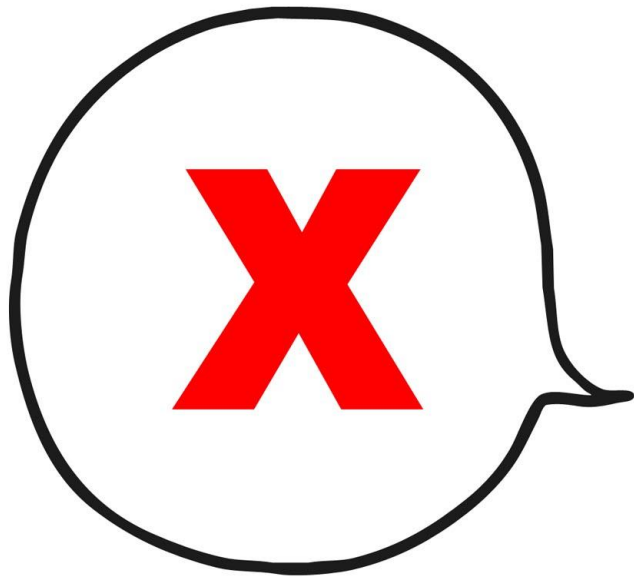


Meaning:
before

antenatal antedate



Prefix: **non**



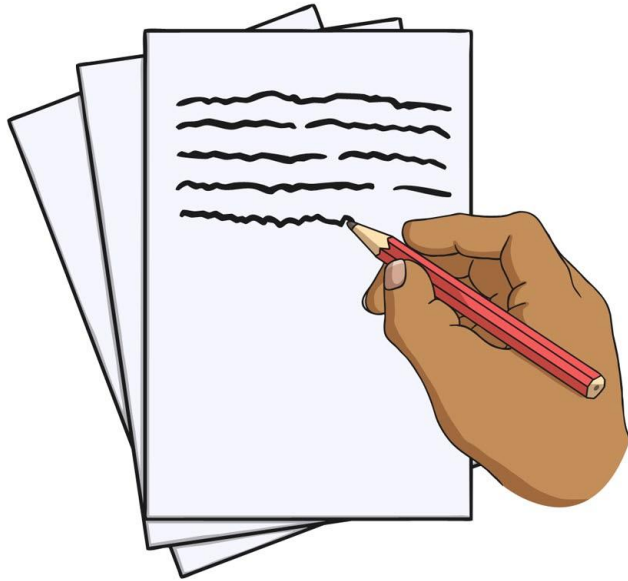
Meaning:
not

nonverbal

nonsense



Prefix: **il**



Meaning:
not

illegible

illegal



Prefix: **un**



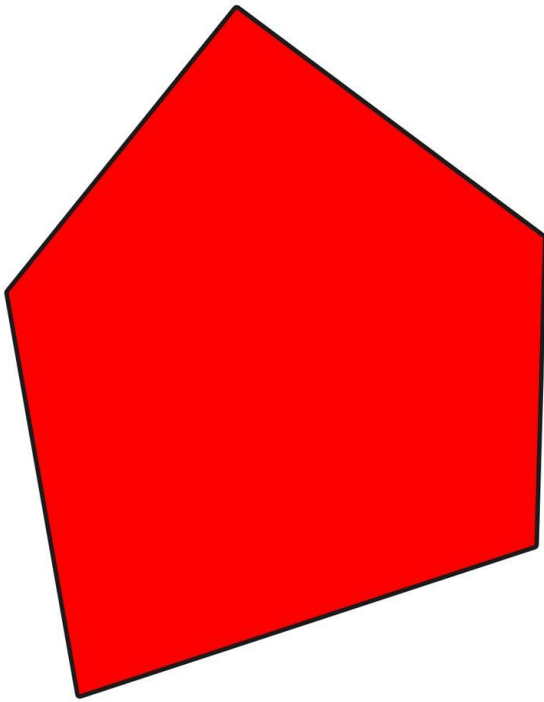
Meaning:
not

unbutton

unhappy



Prefix: ir



Meaning:
not

irregular irresponsible



Prefix: uni



unicycle

Meaning:
one



unicorn